

# SPACE REQUIREMENTS & BODY CONDITION SCORING FOR RAISING LIVESTOCK



# SPACE REQUIREMENTS FOR CATTLE

## RAISING LIVESTOCK

| CALVES                             | FINISHERS & BRED HEIFERS             | MATURE COWS                        |
|------------------------------------|--------------------------------------|------------------------------------|
| <b>Shelter and Lot Space</b>       | <b>Shelter and Lot Space</b>         | <b>Shelter and Lot Space</b>       |
| 15 to 20 square feet               | 20 to 25 square feet                 | 20 to 25 square feet               |
| <b>Outdoor Space</b>               | <b>Outdoor Space</b>                 | <b>Outdoor Space</b>               |
| 300 to 600 square feet             | 400 to 800 square feet               | 500 to 800 square feet             |
| <u>5 Calves</u>                    | <u>5 Steers &amp; 5 Bred Heifers</u> | <u>5 Mature Cows</u>               |
| <i>100 sq. ft. Shelter Space</i>   | <i>250 sq. ft. Shelter Space</i>     | <i>125 sq. ft. Shelter Space</i>   |
| <i>2,500 sq. ft. Outdoor Space</i> | <i>6,000 sq. ft. Outdoor Space</i>   | <i>3,500 sq. ft. Outdoor Space</i> |



# SPACE REQUIREMENTS FOR POULTRY

## RAISING LIVESTOCK

| Broiler                          | Egg Layer                       | Turkey                           | Ducks & Geese                    |
|----------------------------------|---------------------------------|----------------------------------|----------------------------------|
| <b>Shelter Space</b>             | <b>Shelter Space</b>            | <b>Shelter Space</b>             | <b>Shelter Space</b>             |
| 1 to 2 square feet               | 1 ½ to 3 square feet            | 3 to 5 square feet               | 3 to 6 square feet               |
| <b>Outdoor Space</b>             | <b>Outdoor Space</b>            | <b>Outdoor Space</b>             | <b>Outdoor Space</b>             |
| 4 to 10 square feet              | 4 to 10 square feet             | 18 to 25 square feet             | 15 to 18 square feet             |
| <u>15 Broilers</u>               | <u>Layers</u>                   | <u>10 Turkeys</u>                | <u>10 Ducks</u>                  |
| <i>30 sq. ft. Shelter Space</i>  | <i>30 sq. ft. Shelter Space</i> | <i>40 sq. ft. Shelter Space</i>  | <i>50 sq. ft. Shelter Space</i>  |
| <i>120 sq. ft. Outdoor Space</i> | <i>80 sq. ft. Outdoor Space</i> | <i>200 sq. ft. Outdoor Space</i> | <i>170 sq. ft. Outdoor Space</i> |



# SPACE REQUIREMENTS FOR SHEEP & GOATS

## RAISING LIVESTOCK

| <b>Adult</b>                     | <b>Female w/ Baby</b>            | <b>Feeder Lamb/Kid</b>             |
|----------------------------------|----------------------------------|------------------------------------|
| <b>Shelter Space</b>             | <b>Shelter Space</b>             | <b>Shelter Space</b>               |
| 15 to 20 square feet             | 15 to 20 square feet             | 8 to 10 square feet                |
| <b>Outdoor Space</b>             | <b>Outdoor Space</b>             | <b>Outdoor Space</b>               |
| 25 to 40 square feet             | 30 to 50 square feet             | 20 to 30 square feet               |
| <u>25 Adults</u>                 | <u>10 Pairs</u>                  | <u>35 Lamb/Kid</u>                 |
| <i>500 sq. ft. Shelter Space</i> | <i>250 sq. ft. Shelter Space</i> | <i>350 sq. ft. Shelter Space</i>   |
| <i>875 sq. ft. Outdoor Space</i> | <i>500 sq. ft. Outdoor Space</i> | <i>1,050 sq. ft. Outdoor Space</i> |



# SPACE REQUIREMENTS FOR SWINE

## RAISING LIVESTOCK

| <b>Adult</b>                     | <b>Nursery Piglet</b>           | <b>Feeder &amp; Finisher</b>       |
|----------------------------------|---------------------------------|------------------------------------|
| <b>Shelter Space</b>             | <b>Shelter Space</b>            | <b>Shelter Space</b>               |
| 8 to 40 square feet              | 3 to 4 square feet              | 5 to 6 square feet                 |
| <b>Outdoor Space</b>             | <b>Outdoor Space</b>            | <b>Outdoor Space</b>               |
| 14 to 40 square feet             | 6 to 8 square feet              | 12 to 15 square feet               |
| <u>3 Adults</u>                  | <u>10 Piglets</u>               | <u>3 Feeders &amp; 2 Finishers</u> |
| <i>90 sq. ft. Shelter Space</i>  | <i>40 sq. ft. Shelter Space</i> | <i>30 sq. ft. Shelter Space</i>    |
| <i>120 sq. ft. Outdoor Space</i> | <i>80 sq. ft. Outdoor Space</i> | <i>75 sq. ft. Outdoor Space</i>    |

# SPACE REQUIREMENTS FOR RABBITS

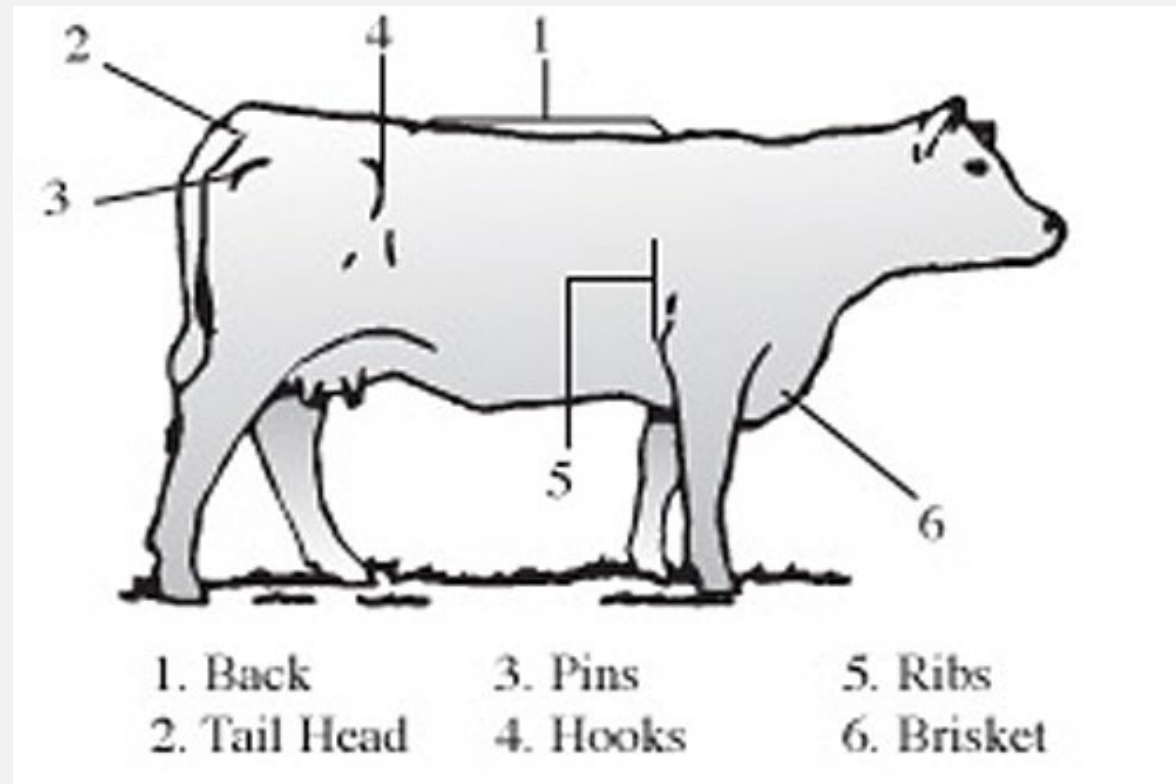
## RAISING LIVESTOCK

| Adult & Fryer                    | Doe with Kits                    |
|----------------------------------|----------------------------------|
| <b>Meat Breeds</b>               | <b>Meat Breeds</b>               |
| 4 ft <sup>2</sup> by 14 in. high | 6 ft <sup>2</sup> by 14 in. high |
| <b>Giant Breeds</b>              | <b>Giant Breeds</b>              |
| 5 ft <sup>2</sup> by 14 in. high | 8 ft <sup>2</sup> by 14 in. high |
| <u>3 Adults</u>                  | <u>3 Does with Kits</u>          |
| 12 sq. ft. Meat Breeds           | 18 sq. ft. Meat Breeds           |
| 15 sq. ft. Meat Breeds           | 24 sq. ft. Meat Breeds           |

# BODY CONDITION SCORING

## RAISING LIVESTOCK



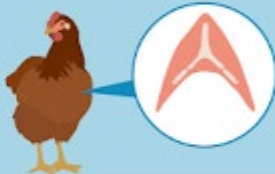


- Observe and evaluate
  - Management program
  - Herd and individual health
  - Nutritional program



# BODY CONDITION SCORING

## RAISING LIVESTOCK

- Poultry
- 1 through 5 scale
- 3 is ideal

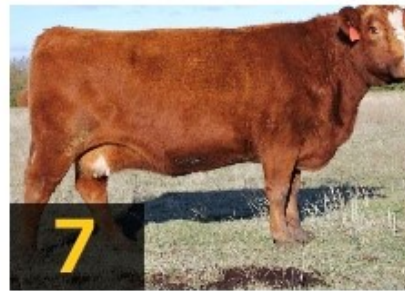
| BODY CONDITION SCORE CHART   |   |
|--|---|
| Chicken  |   |
| <b>1</b> EMACIATED<br><b>Keel:</b> Prominent ridge<br><b>Breast muscle:</b> Limited; Concave                               |    |
| <b>2</b> UNDER-CONDITIONED<br><b>Keel:</b> Prominent<br><b>Breast muscle:</b> Not concave. Feels more or less flat.        |    |
| <b>3</b> WELL-CONDITIONED<br><b>Keel:</b> Less prominent<br><b>Breast muscle:</b> Moderately developed; Convex             |    |
| <b>4</b> OVER-CONDITIONED<br><b>Keel:</b> Smooth<br><b>Breast muscle:</b> Well developed, relatively plump.                |  |
| <b>5</b> OBESE<br><b>Keel:</b> Muscle protrudes over. It's difficult to palpate.<br><b>Breast muscle:</b> Overly developed |  |



# BODY CONDITION SCORING

## RAISING LIVESTOCK

- Cattle
  - 1 through 8 scale
  - 5 & 6 are ideal

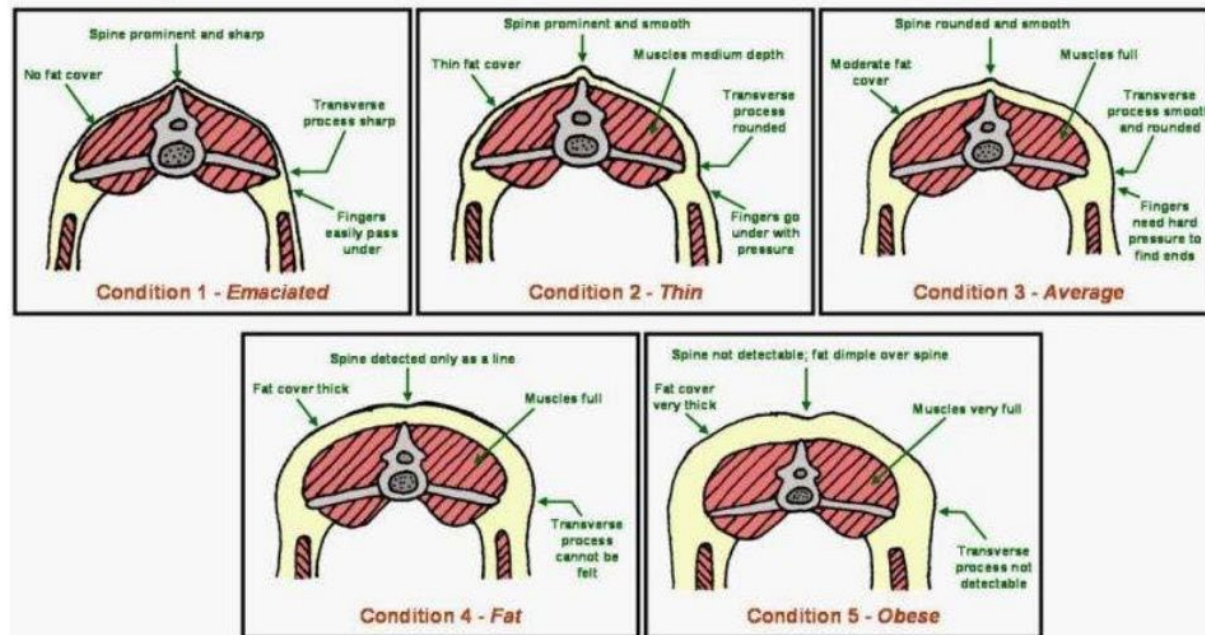


# BODY CONDITION SCORING

## RAISING LIVESTOCK

- Sheep and Goats
- 1 through 5 scale
- 2-4 are ideal

### Body Condition Scores – Sheep/Goats



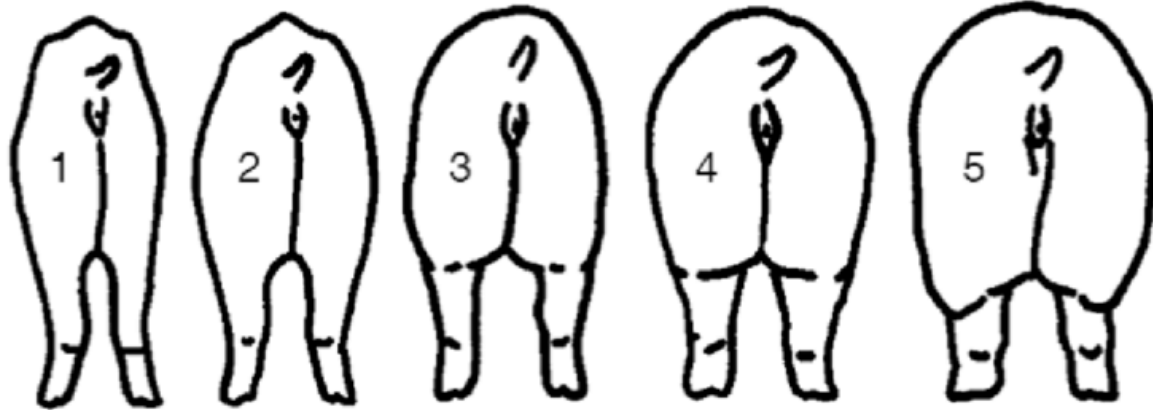
Adapted from "Body Condition Scoring of Sheep" by J.M. Thompson and H. Mayer (Oregon State University)



# BODY CONDITION SCORING

## RAISING LIVESTOCK

- Pigs
- 1 through 5 scale
- 3 is ideal

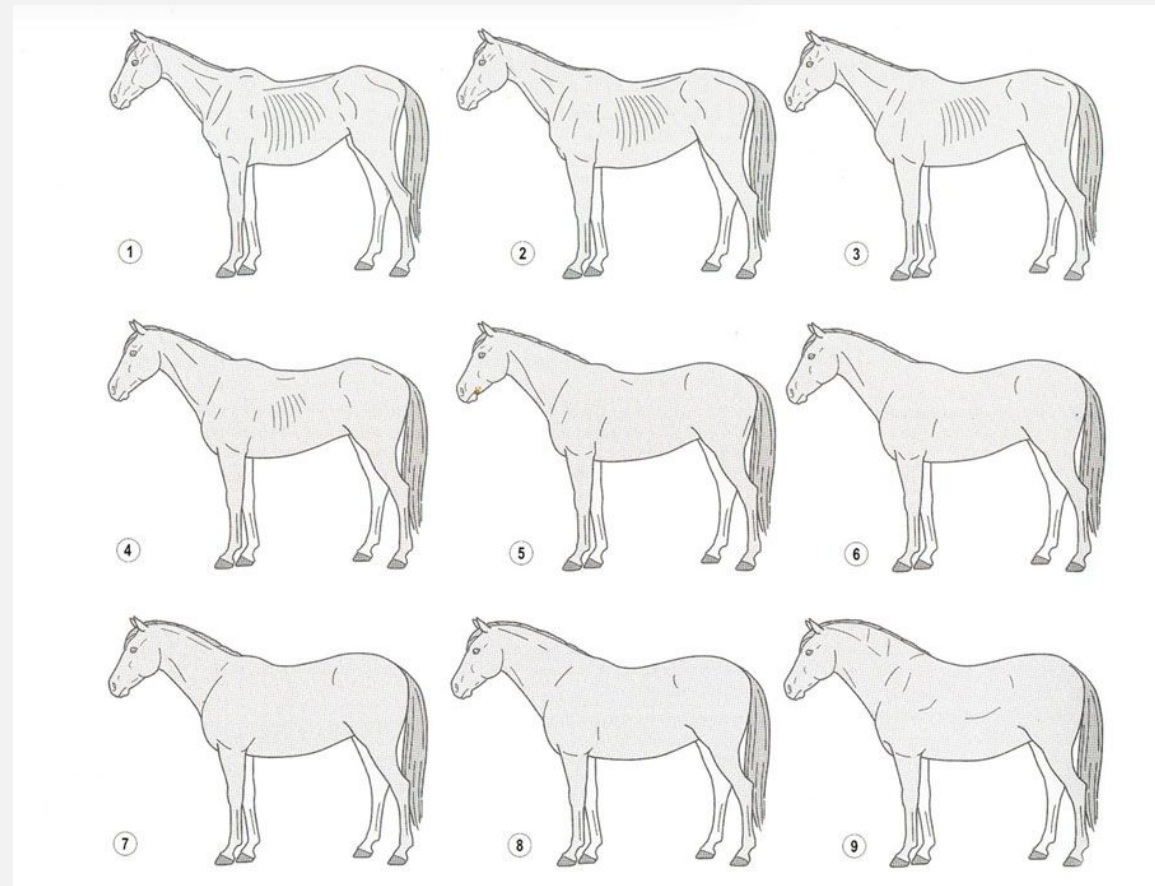


| Score | Condition  | Detection of ribs, backbone, "H" bones, and "pin" bones |
|-------|------------|---|
| 1     | Emaciated  | Obvious   |
| 2     | Thin       | Easily detected with pressure                           |
| 3     | Ideal      | Barely felt with firm pressure                          |
| 4     | Fat        | None  |
| 5     | Overly fat | None  |

# BODY CONDITION SCORING

## RAISING LIVESTOCK

- Horses
  - 1 through 9 scale
  - 4-6 is ideal



Rebecca Mills

Extension Educator, Gem & Boise Counties

[rmills@uidaho.edu](mailto:rmills@uidaho.edu)